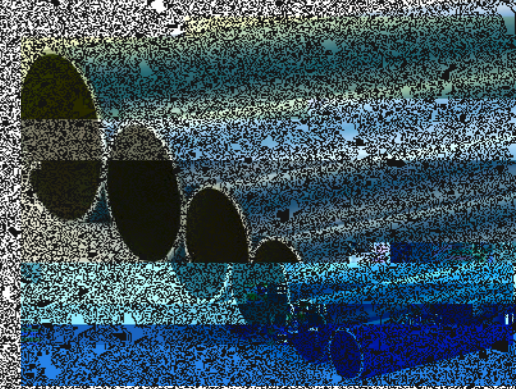
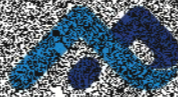
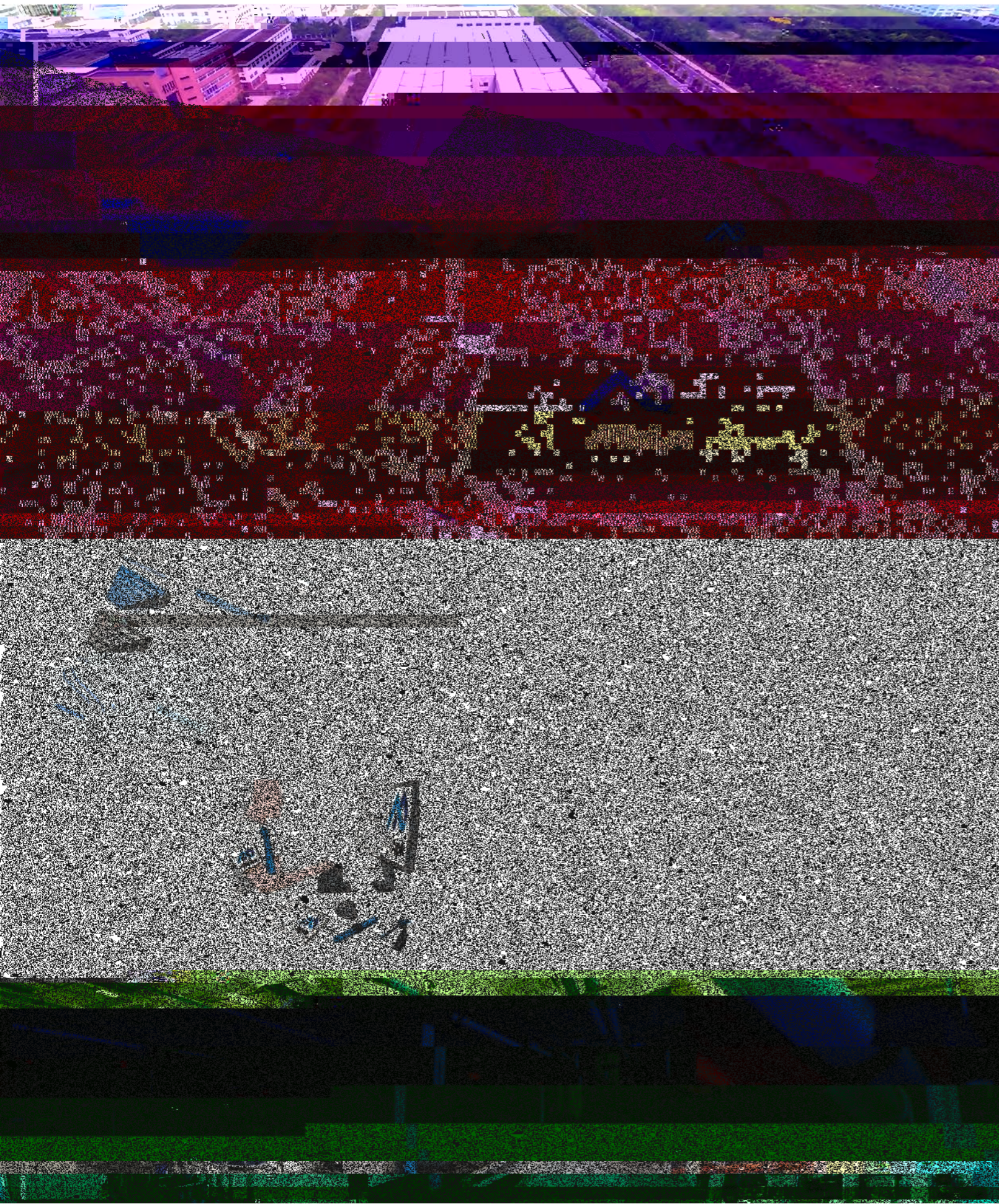


We provide superior
performing compressed air



ENGINEERED FOR PRODUCTION





Superior Reliability & Longevity

-
- IV
-



Energy & Cost Savings

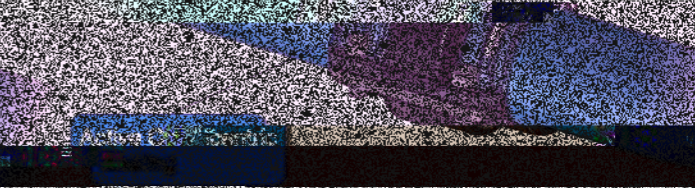
-
-
-

Energy & Cost Savings

Energy & Cost Savings

Superior Performance

-
-
-
-



Superior Performance
• Superior performance
• Superior performance
• Superior performance





Ball & Butterfly Valves

Pipe Connectors

Flexible Hoses

- S
- A
- R
- R

Quick Connectors

Tees & Accessories

- S
- U
- D

BLUE ALUMINUM PIPE

GREEN ALUMINUM PIPE

GRAY ALUMINUM PIPE

END FITTINGS

EQUAL PIPE TO PIPE CONNECTORS

EQUAL TEE

REDUCING PIPE TO PIPE CONNECTORS

EQUAL 90° ELBOW

EQUAL 45° ELBOW

TEE

LATERAL REDUCING TEE

JOINT REPAIR

JOINT REPAIR

FIXTURE CLAMP ACCESSORIES

Clamps, Plastic

AIRpipe	DN
302 22 0100 01	20
302 22 0200 01	25
302 22 0400 01	40
302 22 0500 01	50
302 22 0600 01	63
302 22 0700 01	80
302 22 0800 01	100

UNGRADED ADAPTORS

Aluminum, Male Thread
*Male Thread

AIRpipe	BSP	1/2"	3/4"
301 31 0000 01		1/2"	1/2"
301 31 0100 01		3/4"	3/4"
301 31 0200 01		1"	1"
301 31 0400 01		1 1/2"	1 1/2"
301 31 0500 01		2"	2"

Aluminum, Male Thread
*Female Thread

AIRpipe

AIR ANALYSIS BAG

AIRpipe	BSP	Length (MM)
301 85 0001 01		200
301 85 0002 01		300
301 85 0003 01		400

* 4 1/2" aside outlet

SAMPLE BOX

AIRpipe	302 46 0001 01	200x270x190mm
---------	----------------	---------------

ALUMINUM PIPE DEBURRER

AIRpipe	DN
301 35 0003 01	20-50

SPANNERS

AIRpipe	301 35 0007 01
---------	----------------

ALUMINUM PIPE CUTTER

ADJUSTABLE BRACKET

Complete With Wall Expansion Bolts

AIRpipe	Length (MM)	to suit
301 32 0004 01	1200-2400	Threaded
301 32 0005 01	1800-2000	Flange

WALL MOUNTED BACKET

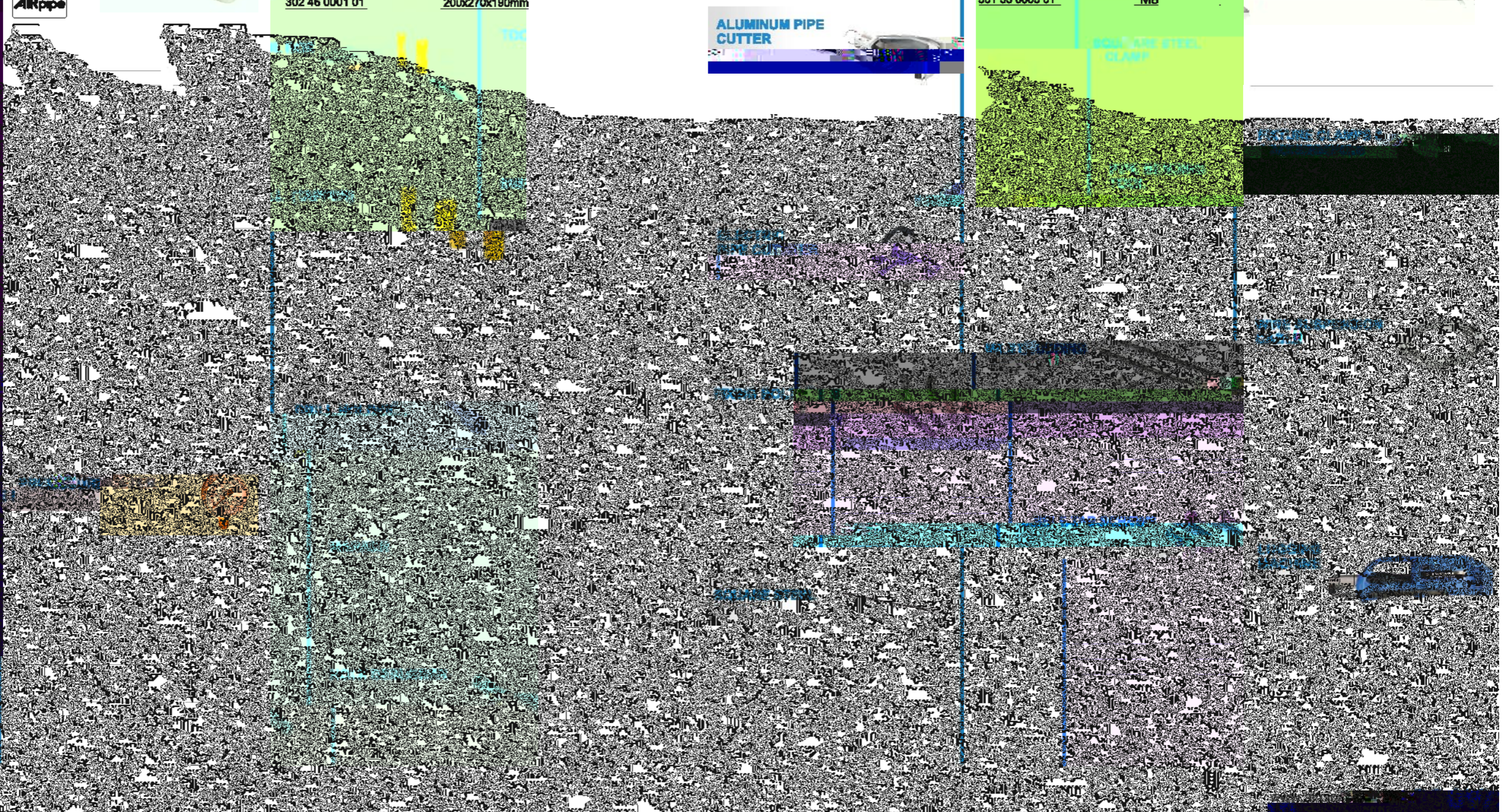
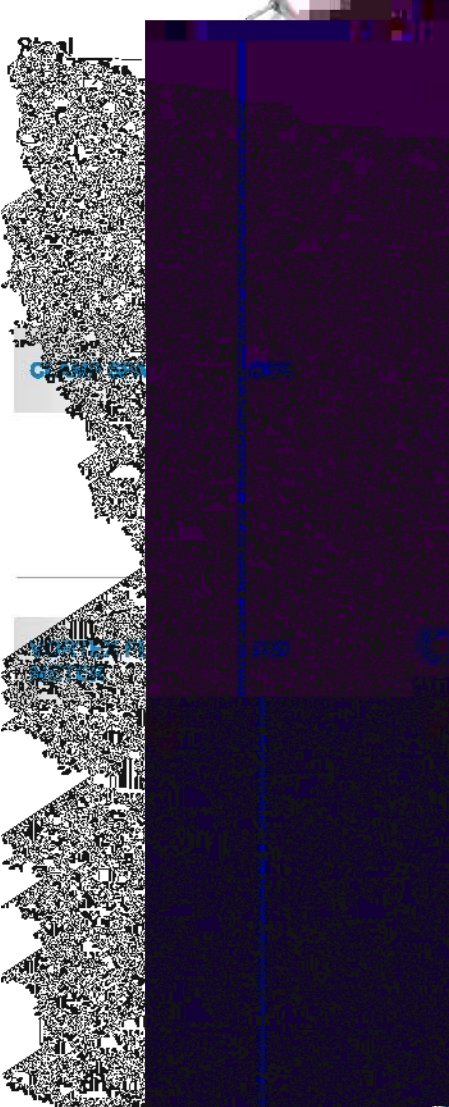
Complete With Wall Expansion Bolts

AIRpipe	Length (MM)
301 32 0000 01	300
301 32 0001 01	500
301 32 0002 01	1200
301 32 0006 01	Suit to DN150/ DN200 pipe

GRID

AIRpipe	M8
301 33 0003 01	

UNIVERSAL BEAM SUSPENDER



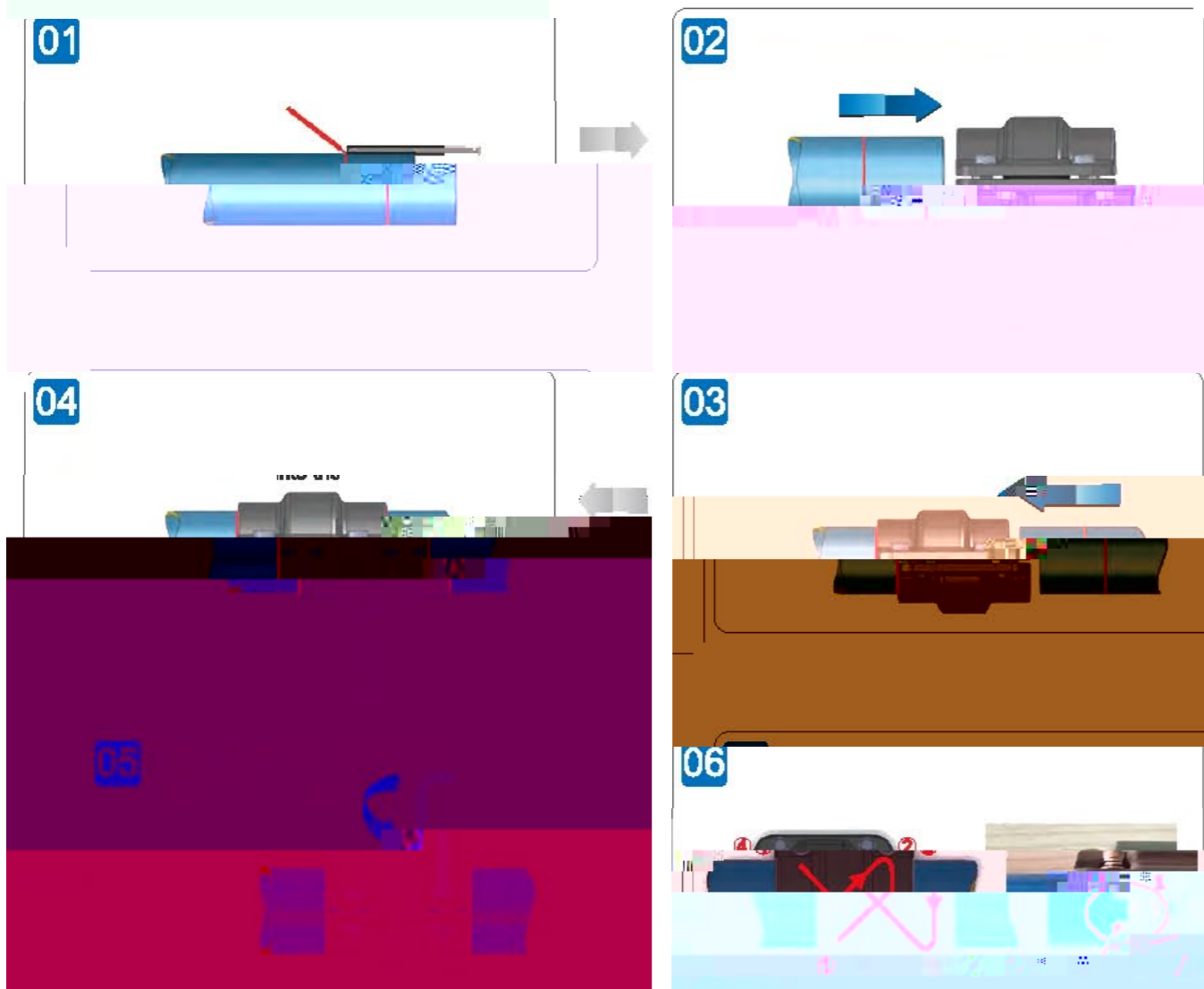
Superior Reliability!



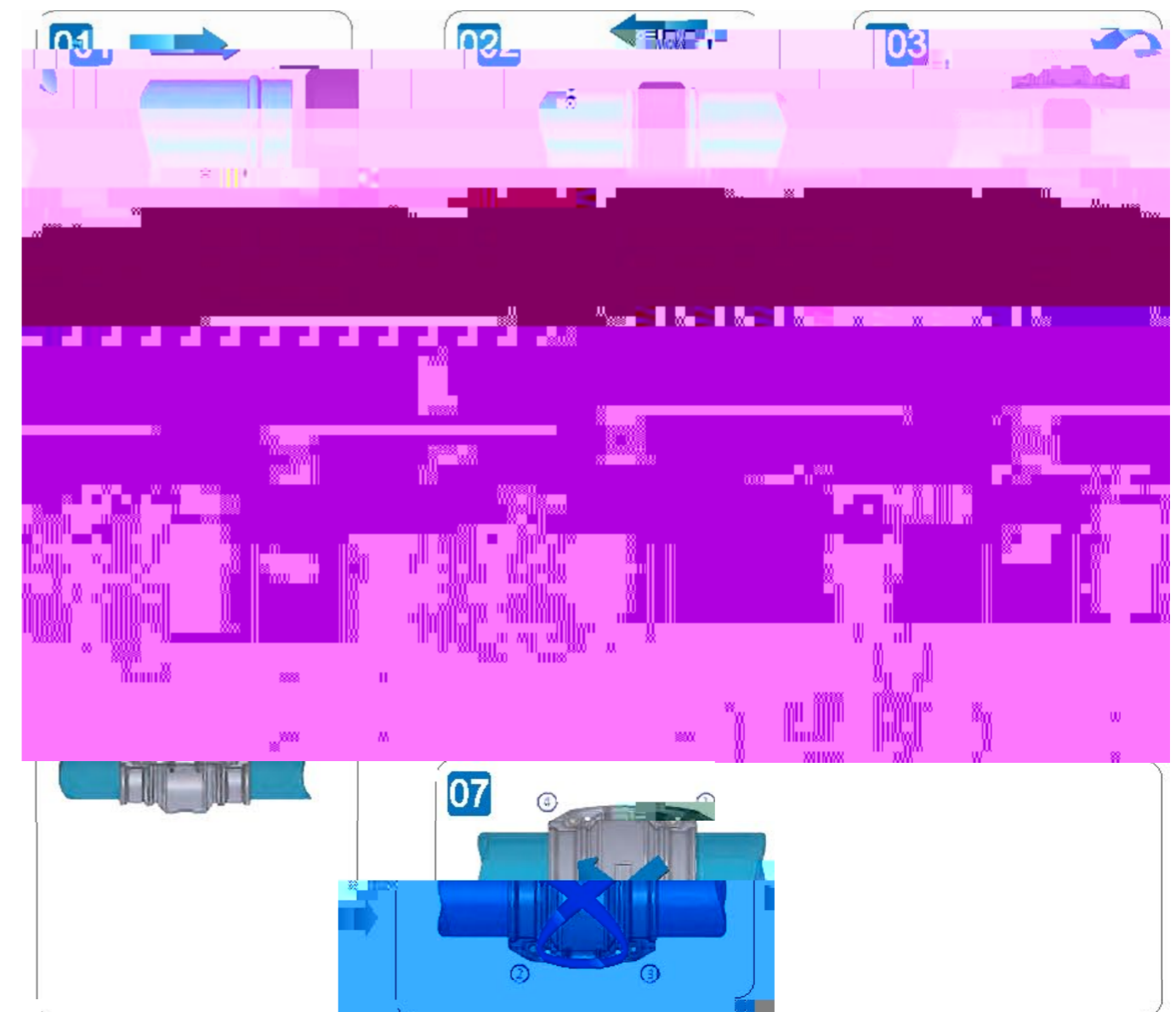
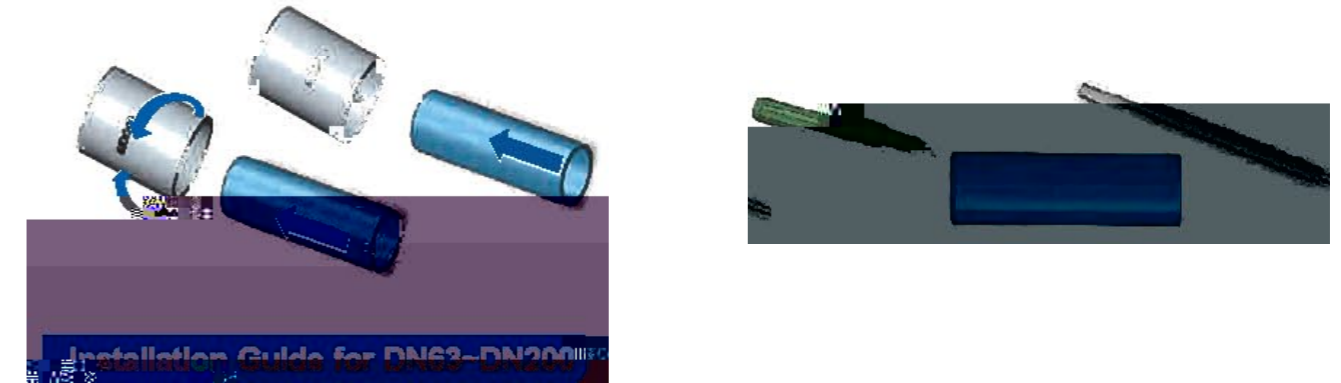
Insertion Depth For DN20 - DN50 Connections

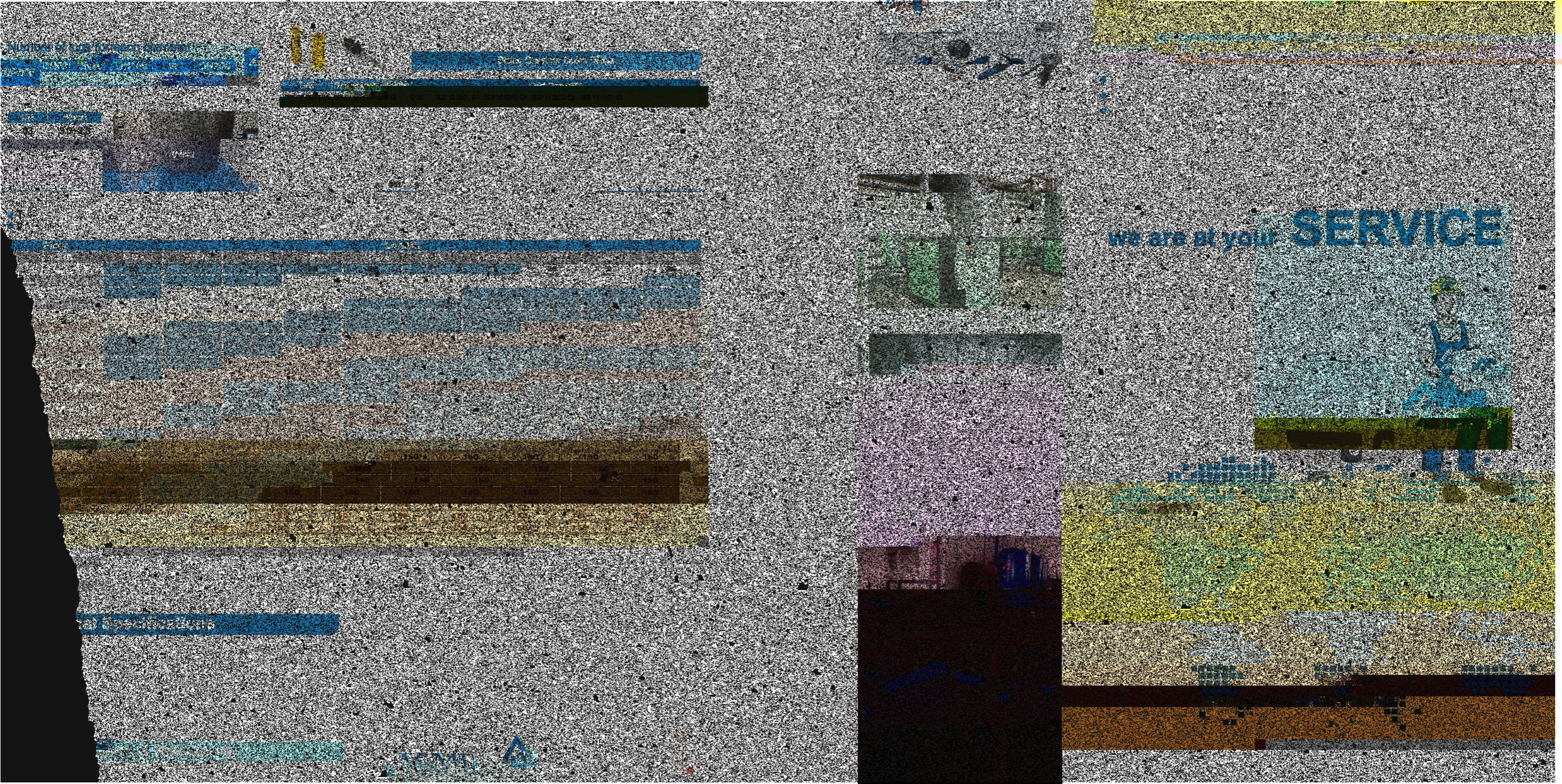


Installation Guide for DN20-DN50



Deburr & Chamfer The Outer and Inner Edges Before Installation





we are at your **SERVICE**