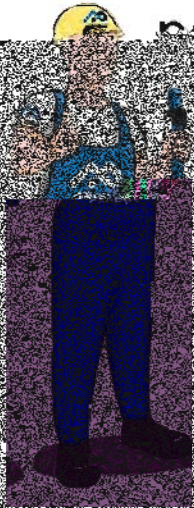
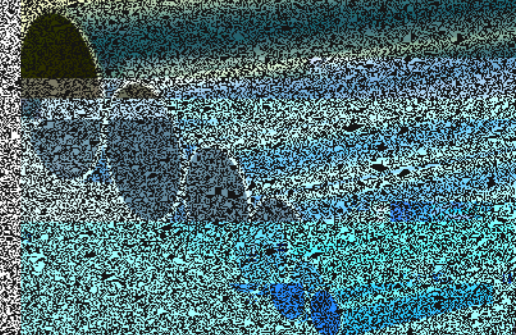
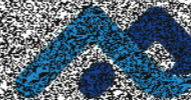
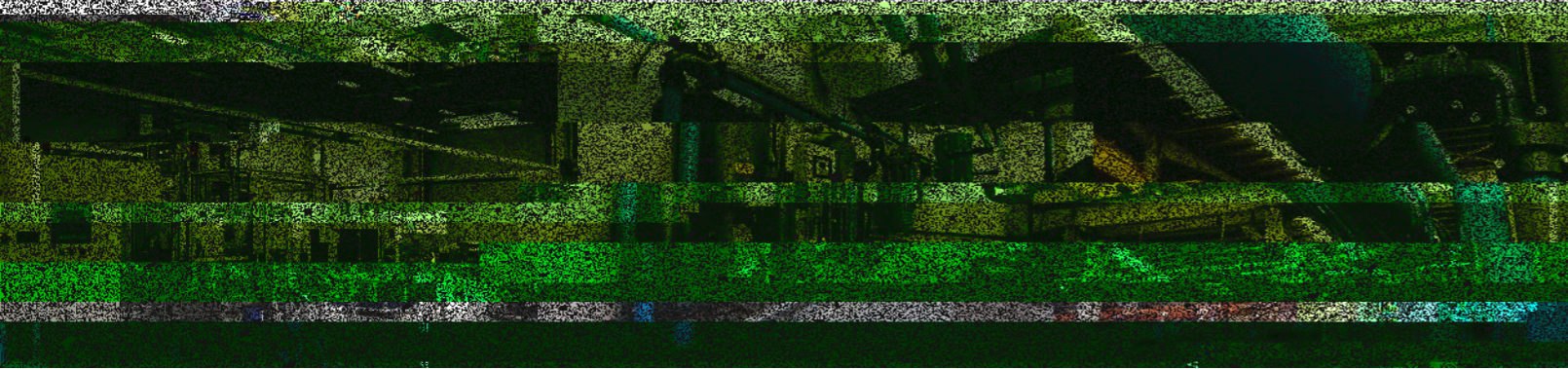
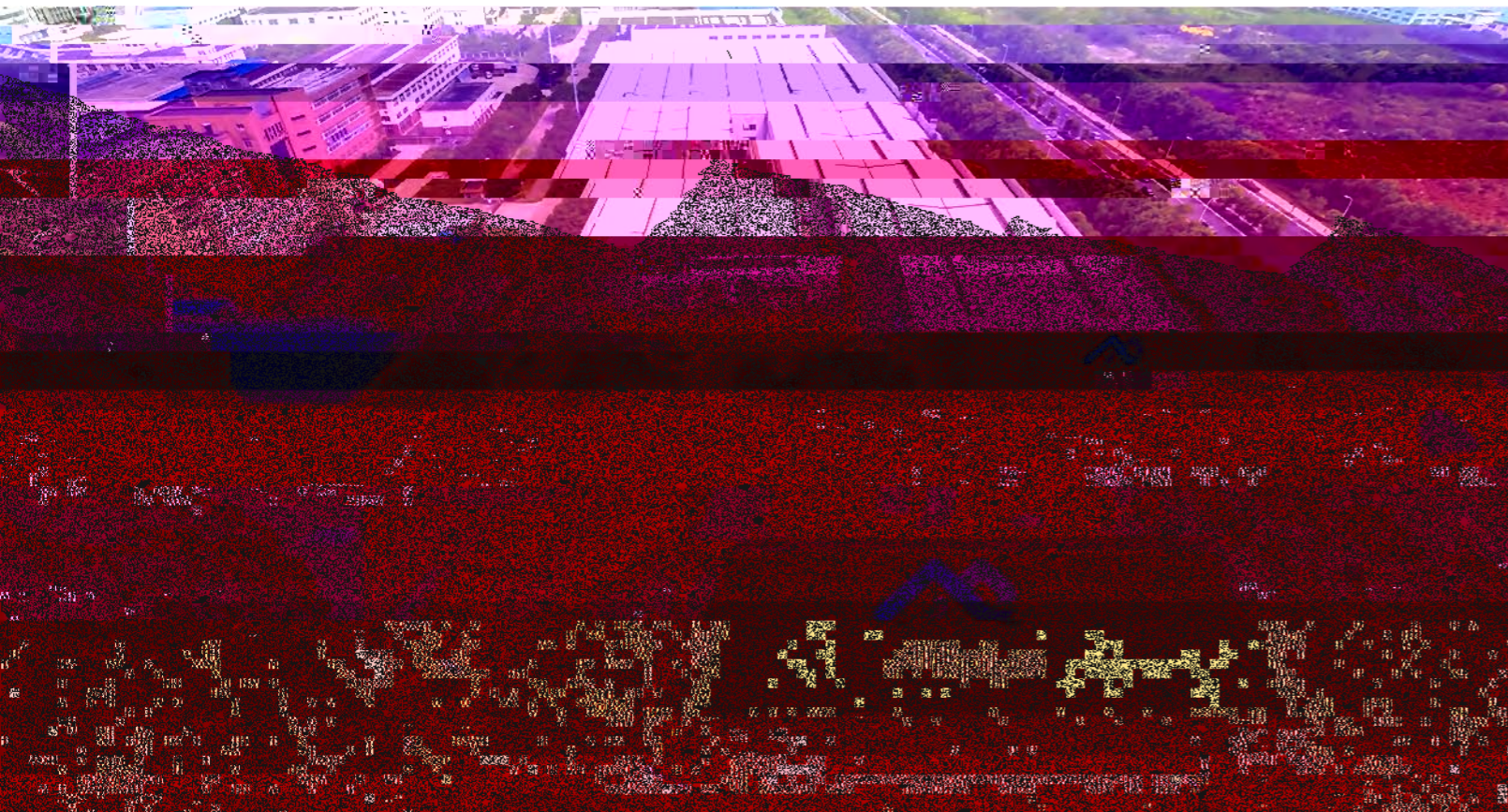


We provide superior
performing compressed air



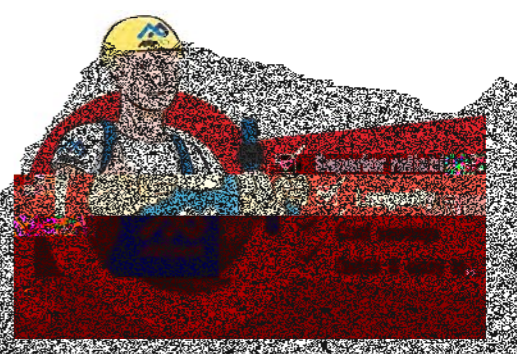
ENGINEERED FOR SUPERIOR PERFORMANCE





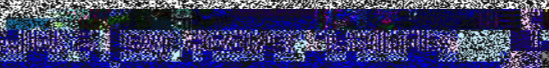
Superior Reliability & Longevity

- Superior Reliability & Longevity
- Superior Reliability & Longevity
- Superior Reliability & Longevity

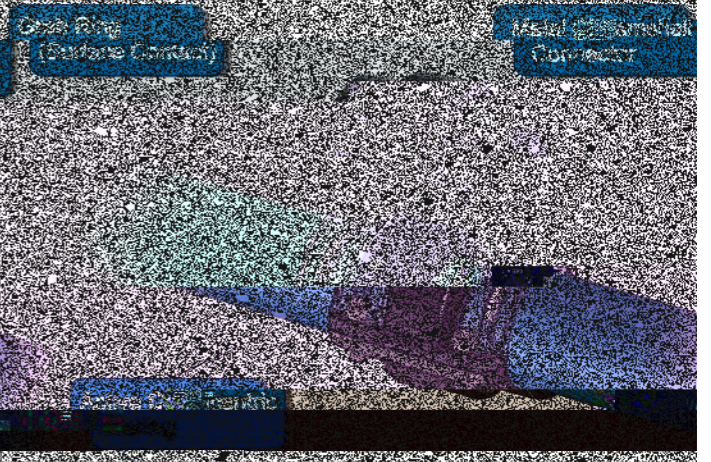


Energy & Cost Savings

- Energy & Cost Savings
- Energy & Cost Savings
- Energy & Cost Savings



- Energy & Cost Savings
- Energy & Cost Savings
- Energy & Cost Savings



Best Performance
• Superior Reliability & Longevity
• Superior Reliability & Longevity
• Superior Reliability & Longevity



Types & Features

Ball & Butterfly Valves




Pipe Connectors




Flexible Hoses



Quick Connectors & Fittings



BLUE ALUMINUM PIPE



GREEN ALUMINUM PIPE



GRAY ALUMINUM PIPE



EQUAL 90° ELBOW



EQUAL 45° ELBOW




TEE




LATERAL REDUCING TEE





EQUAL PIPE TO PIPE CONNECTORS




EQUAL TEE



REDUCING PIPE TO PIPE CONNECTORS

JOINT REPAIR




**ALUMINUM JOINT
MALE THREAD**

**ALUMINUM ELBOW
FEMALE**

VALVED WALL BRACKET

**SWING CHECK
VALVE**

FLANGE

FLEXIBLE HOSES

VALVE



**QUICK DROP
FEMALE THRD**



E/

75°

**BRASS BALL
VALVE**



**BUTTERFLY
VALVE**



**FLANGE(CAST IRON)
FEMALE THREAD**



**QUICK CONNECT
MALE THRD**



**FLANGE(STAINLESS STEEL)
FEMALE THREAD**



PNEUMATIC CONNECTOR MALE



QUICK DROP

**QUICK CONNECT
BALL VALVE**



**NON-VALVED WALL
BRACKETS**



**ALUMINUM
REDUCING FLANGE**



WATER DRAIN VALVE



FIXTURE CONNECTION ACCESSORIES

Clamps, Plastic

AIRpipe	DN
302 22 0100 01	20
302 22 0200 01	25
302 22 0400 01	40
302 22 0500 01	50
302 22 0600 01	63
302 22 0700 01	80
302 22 0800 01	100

UNGRADED ADAPTORS

Aluminum, Male Thread *Male Thread

AIRpipe	BSP	1/2"	3/4"
301 31 0000 01		1/2"	1/2"
301 31 0100 01		3/4"	3/4"
301 31 0200 01		1"	1"
301 31 0400 01		1 1/2"	1 1/2"
301 31 0500 01		2"	2"

Aluminum, Male Thread *Female Thread

AIRpipe

AIR ANALYSIS BAG

AIRpipe	BSP	Length (MM)
301 85 0001 01		200
301 85 0002 01		300
301 85 0003 01		400

* 4 1/2" aside outlet

SAMPLE BOX

AIRpipe	302 46 0001 01	20x270x190mm
---------	----------------	--------------

ALUMINUM PIPE DEBURRER

AIRpipe	DN
301 35 0003 01	20-50

SPANNERS

AIRpipe	301 35 0007 01
---------	----------------

ALUMINUM PIPE CUTTER

ADJUSTABLE BRACKET

Complete With Wall Expansion Bolts

AIRpipe	Length (MM)	to suit
301 32 0004 01	1200-2400	Threaded
301 32 0005 01	1800-2000	Flange

WALL MOUNTED BACKET

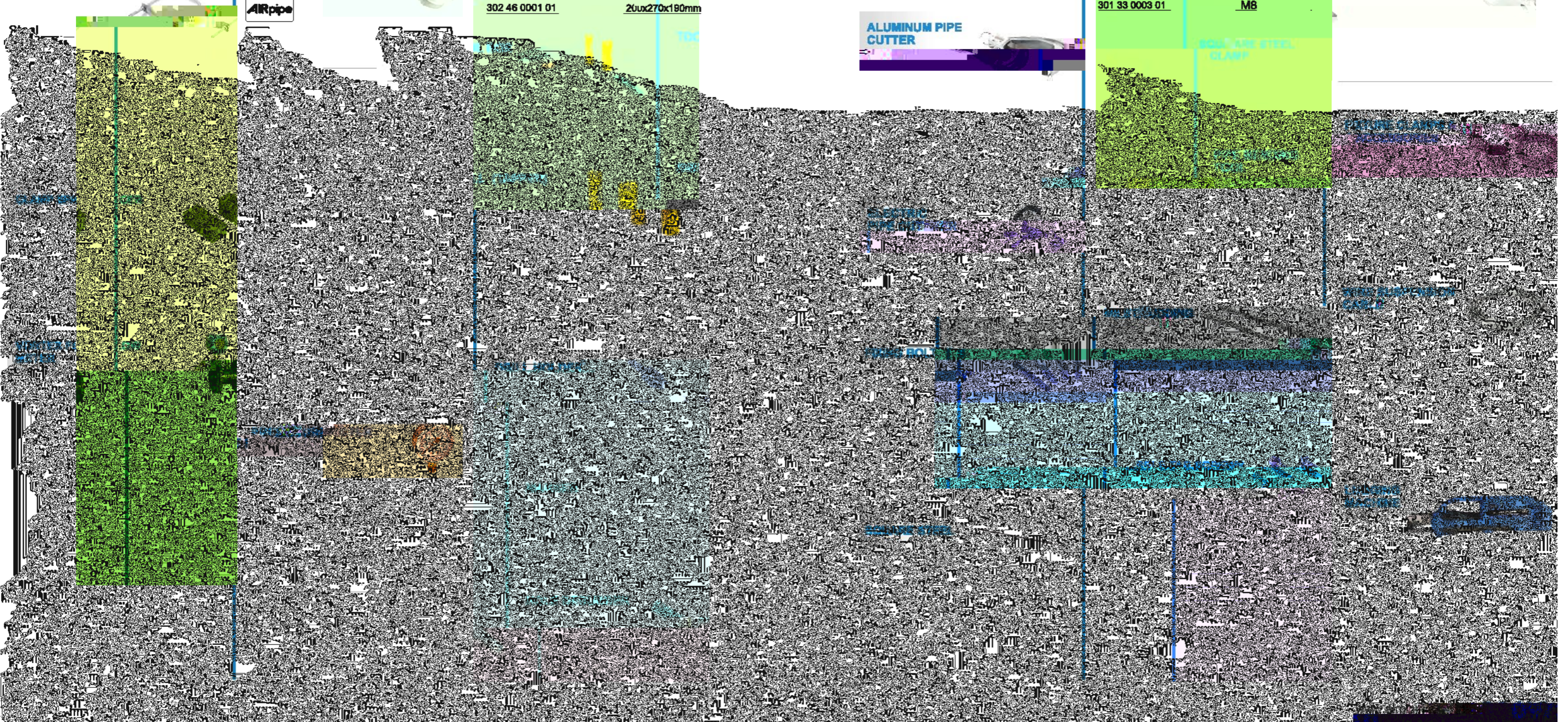
Complete With Wall Expansion Bolts

AIRpipe	Length (MM)
301 32 0000 01	300
301 32 0001 01	500
301 32 0002 01	1200
301 32 0006 01	Suit to DN150/ DN200 pipe

GRID

AIRpipe	M8
301 33 0003 01	

UNIVERSAL BEAM SUSPENDER



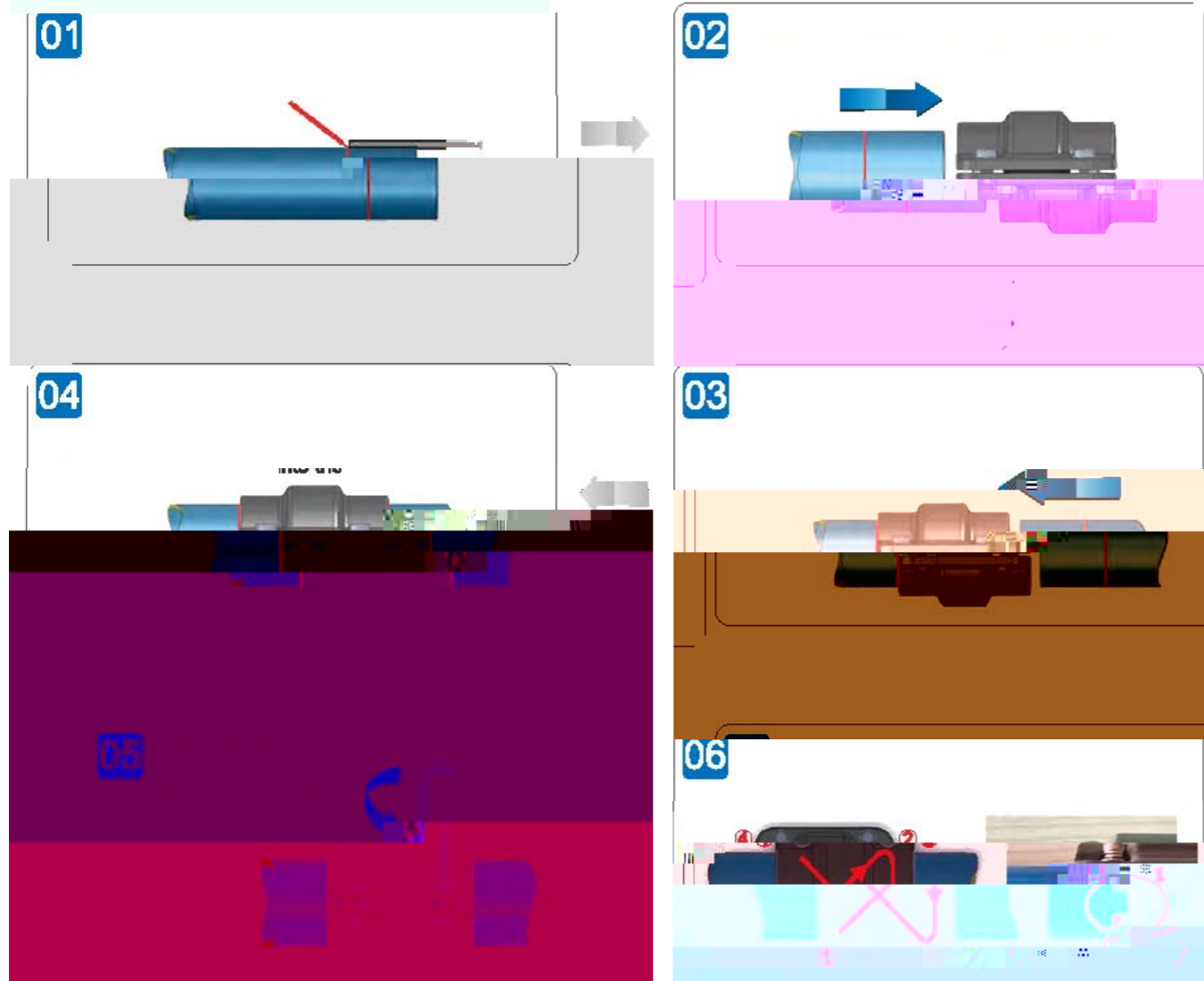
Superior Reliability!



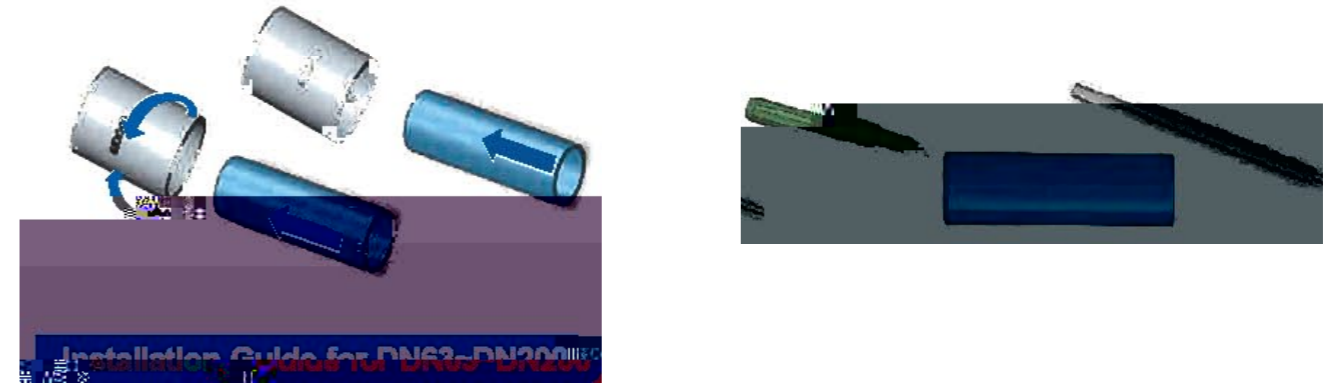
Insertion Depth for DN20-DN50 Connections



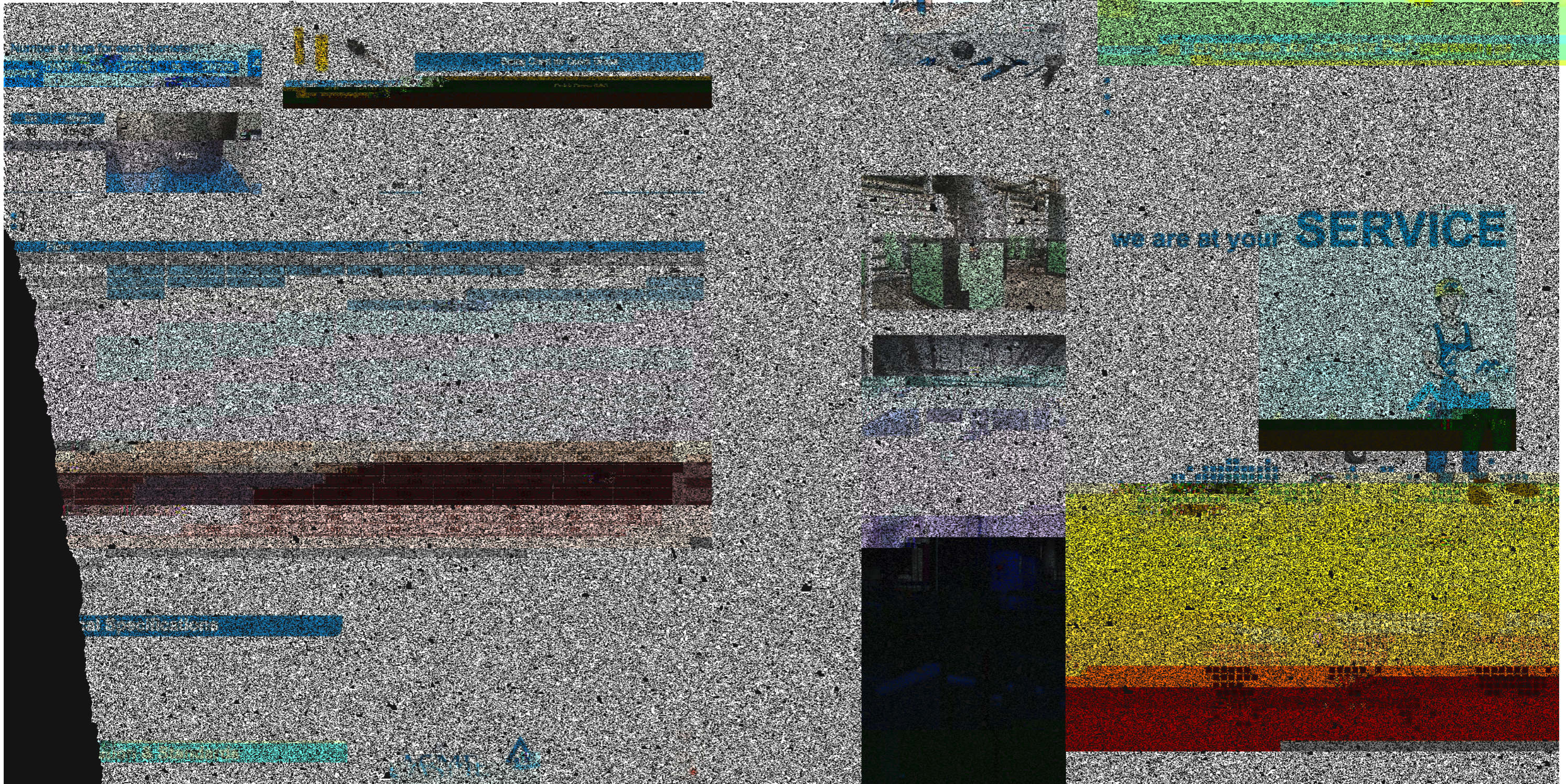
Installation Guide for DN20-DN50



Deburr & Clean The Outer and Inner Edges Before Installation



Hand held hydraulic... for logging in... requirements



we are at your **SERVICE**

